

Comparison of Voter Turnout by St. Paul Planning District by Type of Election by Selected Demographics 2010 & 2012

Overall Change in Voter Turnout by Election

Figure 1 – Saint Paul Estimated Voter Turnout by Election by Year

2010		2012			
<i>Commissioner</i>		<i>State/Federal</i>		<i>Presidential</i>	
N	%	N	%	N	%
62,861	33	93,005	49	143,653	76

Sources: Author calculations using American Community Survey 2008-2012 Count of Voting Age Population (CVAP), Ramsey County, State of Minnesota GIS Office

- 56% drop in voter turnout between 2010 County Commissioner election and 2012 Presidential Election

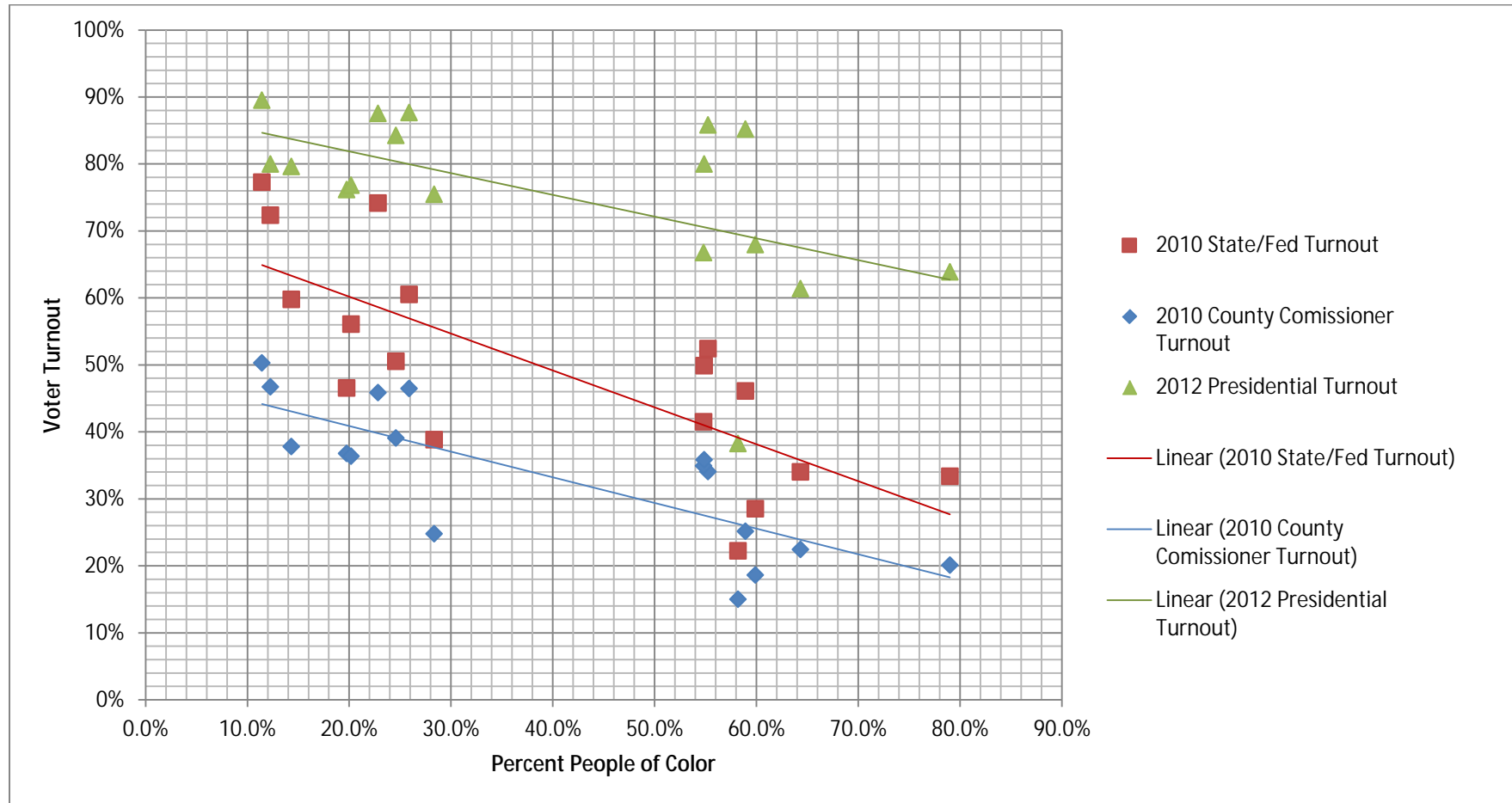
Figure 2 - Voter Turnout by Planning District

District Number	District Name	Eligible Voters	2010 County Commissioner Turnout		2010 State/Federal Turnout		2012 Presidential Turnout		Percent Change in Voter Turnout 2012 and 2010 County Commissioner Election
			N	%	N	%	N	%	
1	Battle Creek-Highwood	13,205	4,498	34	6,924	52	11,335	86	-60
2	Greater East Side	14,380	3,617	25	6,631	46	12,256	85	-70
3	West Side	9,640	3,367	35	4,003	42	6,437	67	-48
4	Dayton's Bluff	9,595	1,442	15	2,136	22	3,673	38	-61
5	Payne-Phalen	16,540	3,710	22	5,630	34	10,155	61	-63
6	North End	14,785	2,755	19	4,218	29	10,050	68	-73
7	Thomas-Dale	8,610	1,733	20	2,873	33	5,501	64	-68
8	Summit-University	11,710	4,199	36	5,841	50	9,369	80	-55
9	West Seventh	8,345	3,069	37	3,886	47	6,356	76	-52
10	Como	10,045	4,692	47	7,268	72	8,035	80	-42
11	Hamline-Midway	10,005	2,479	25	3,887	39	7,551	75	-67
12	St. Anthony Park	5,220	2,395	46	3,872	74	4,571	88	-48
13	Merriam Park	13,220	4,809	36	7,414	56	10,158	77	-53
14	Macalester-Groveland	14,205	7,145	50	10,981	77	12,720	90	-44
15	Highland	18,610	8,651	46	11,262	61	16,318	88	-47
16	Summit Hill	5,675	2,145	38	3,392	60	4,520	80	-53
17	Downtown	5,515	2,155	39	2,787	51	4,648	84	-54

Sources: Author calculations using American Community Survey 2008-2012 Count of Voting Age Population (CVAP), Ramsey County, State of Minnesota GIS Office

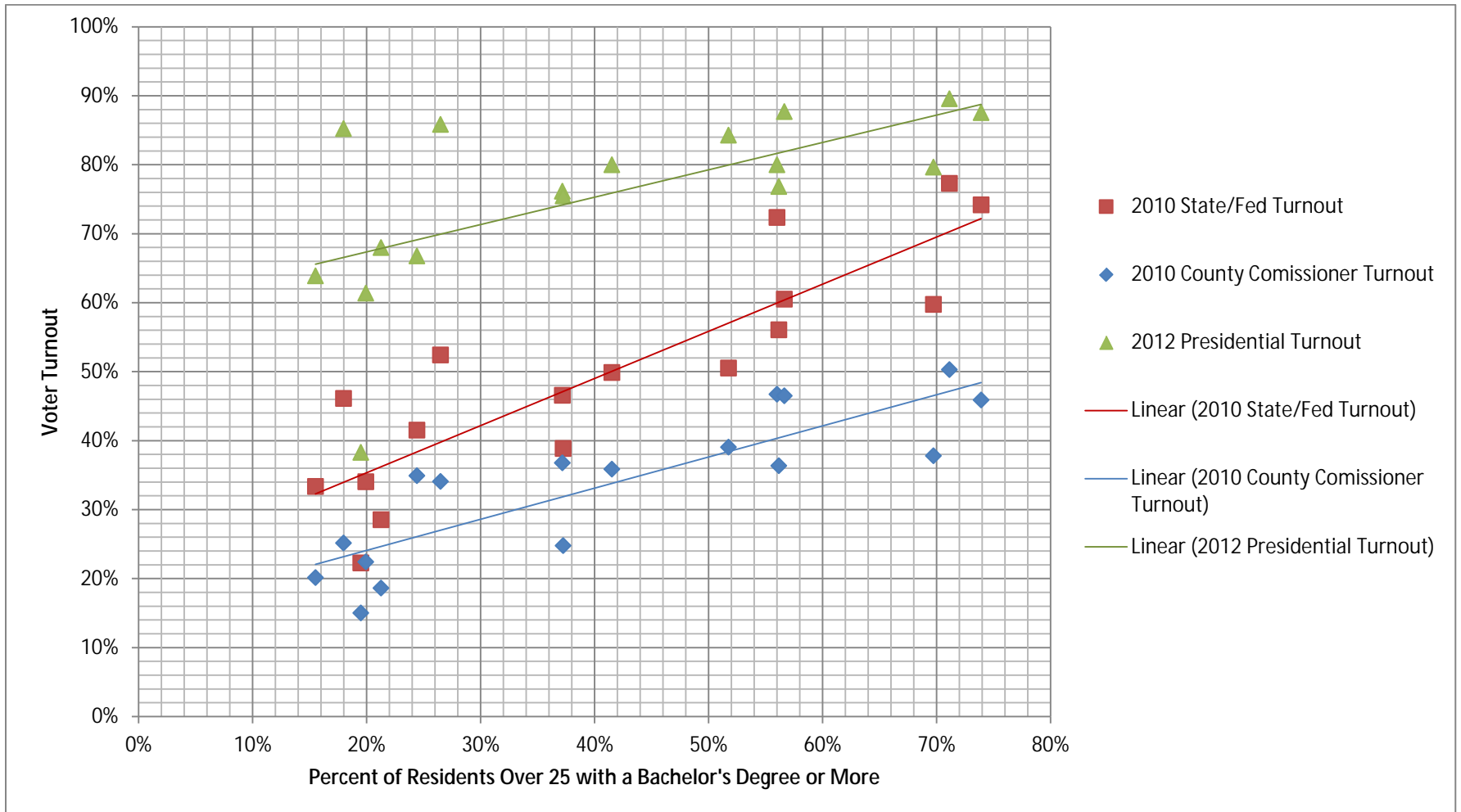
Correlation between Voter Turnout and Selected Demographics by Election by Planning District

Figure 3 - Correlation between Voter Turnout and Percent People of Color by Planning District



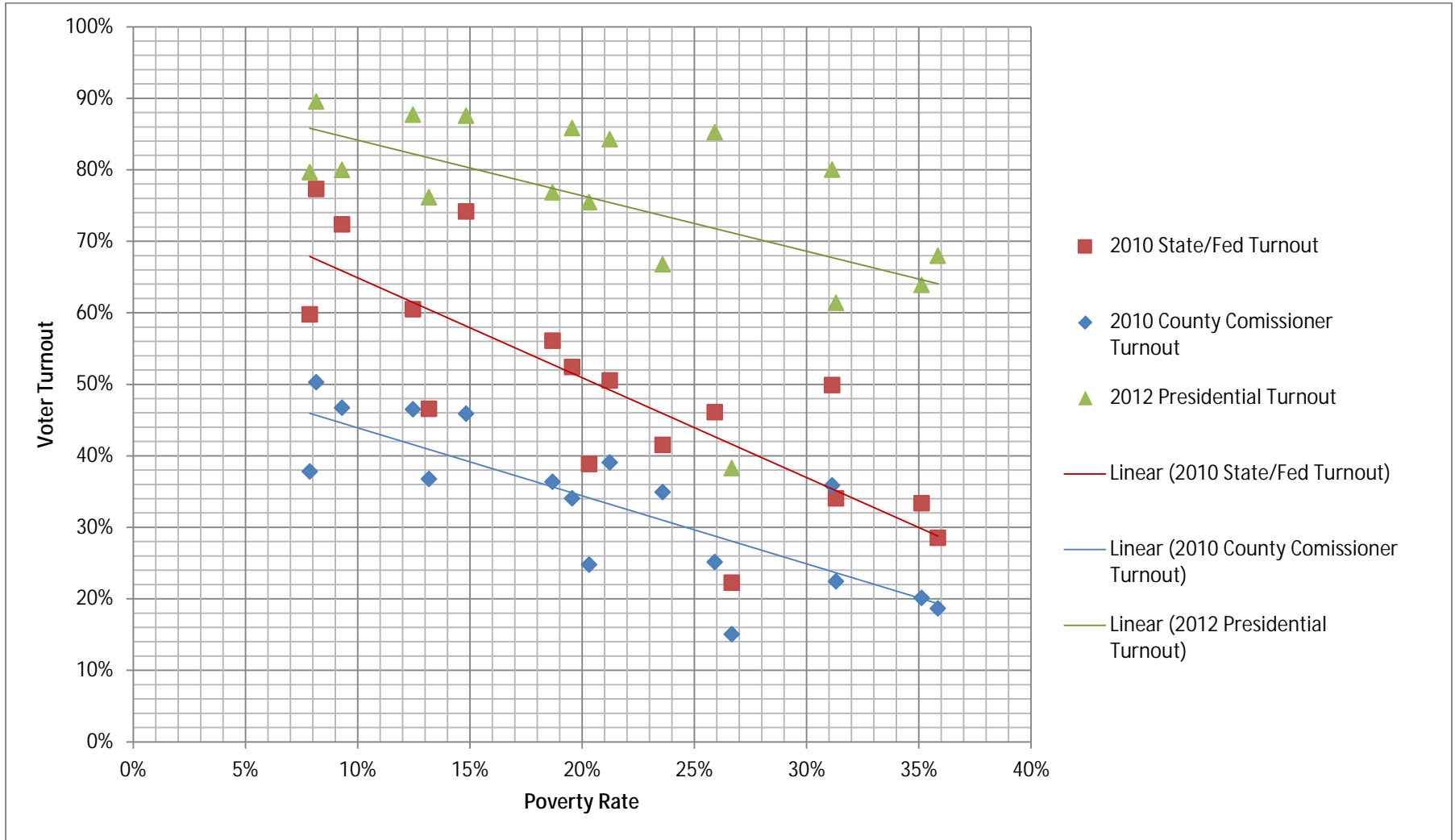
Sources: Author calculations using American Community Survey 2008-2012 Count of Voting Age Population (CVAP), Ramsey County, State of Minnesota GIS Office

Figure 4 - Correlation between Voter Turnout and Percent of Residents Over 25 with a Bachelor's Degree or More by Planning District



Sources: Author calculations using American Community Survey 2008-2012 Count of Voting Age Population (CVAP), Ramsey County, State of Minnesota GIS Office

Figure 5 - Correlation between Voter Turnout and Poverty Rate by Planning District



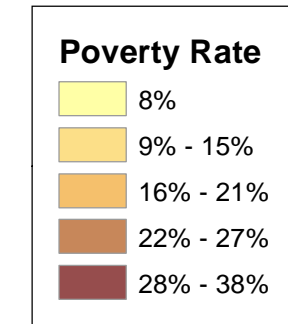
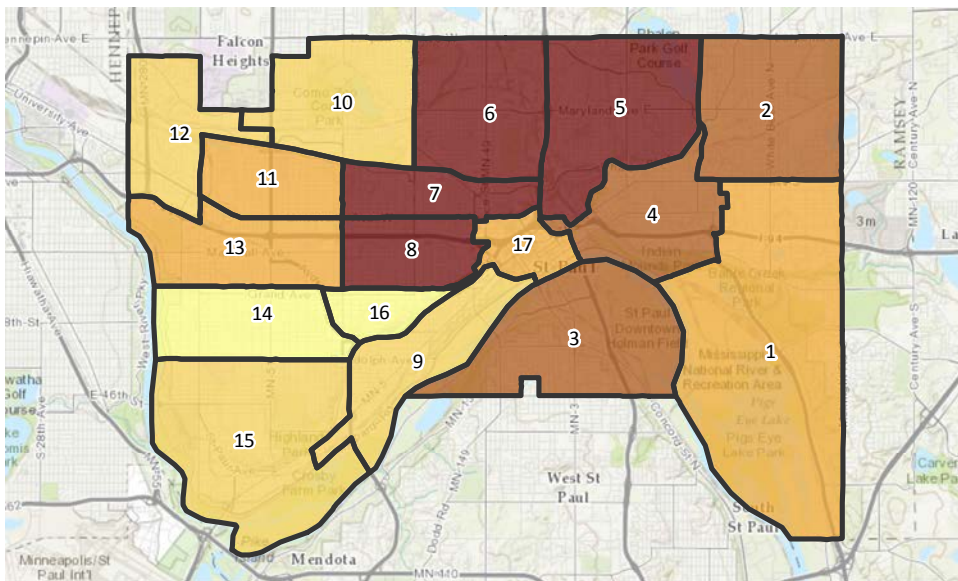
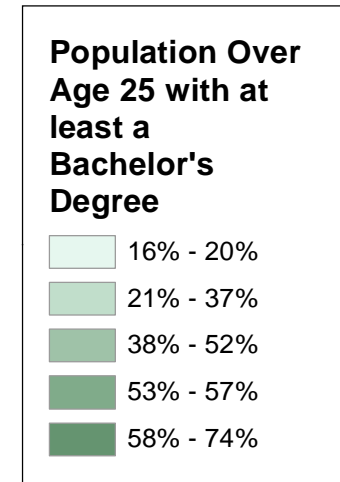
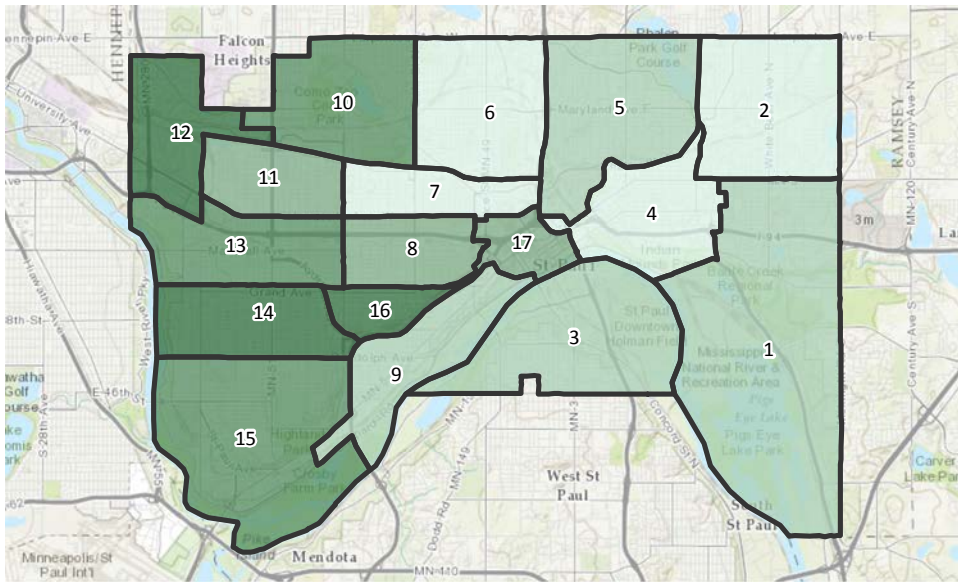
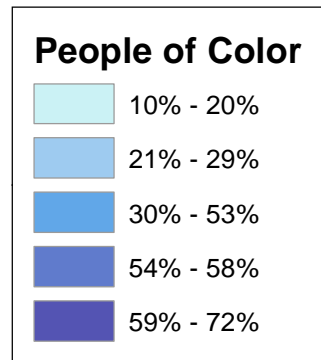
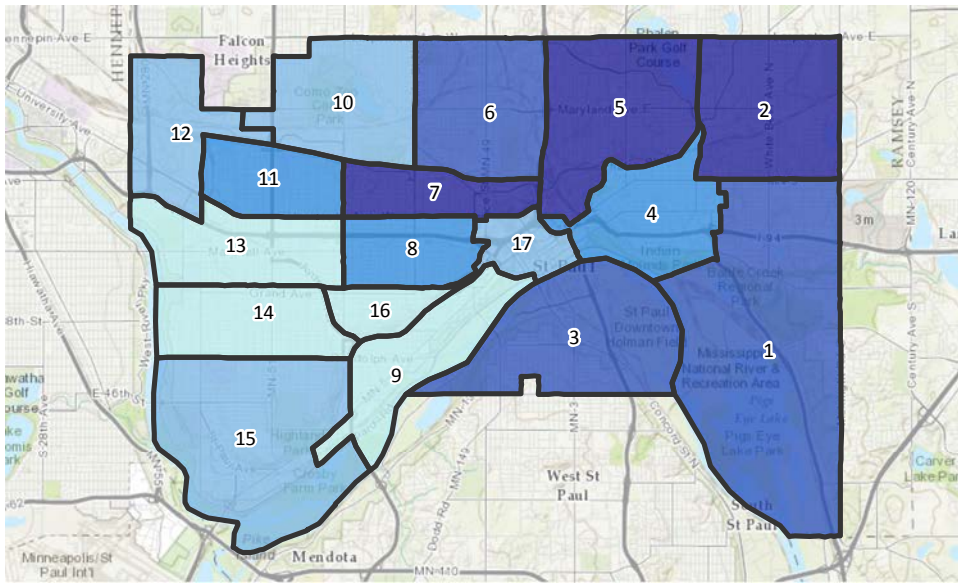
Sources: Author calculations using American Community Survey 2008-2012 Count of Voting Age Population (CVAP), Ramsey County, State of Minnesota GIS Office

Figure 6 - Selected Demographics by Planning District 2008-2012 ACS

District Number	District Name	Total Population	People of Color		Population Over 25	Pop Over 25 with a Bachelor's Degree		Poverty	
			N	%		N	%	N	%
1	Battle Creek-Highwood	20,709	11,440	55	12,382	3,281	26	4,033	19
2	Greater East Side	28,108	16,560	59	15,599	2,804	18	7,275	26
3	West Side	15,761	8,640	55	9,356	2,285	24	3,669	23
4	Dayton's Bluff	16,182	9,418	58	9,613	1,875	20	4,242	26
5	Payne-Phalen	30,379	19,543	64	16,839	3,359	20	9,328	31
6	North End	25,306	15,158	60	13,707	2,915	21	9,035	36
7	Thomas-Dale	15,619	12,339	79	8,339	1,294	16	5,478	35
8	Summit-University	17,061	9,362	55	11,036	4,584	42	5,216	31
9	West Seventh	10,464	2,067	20	7,644	2,843	37	1,353	13
10	Como	12,673	1,554	12	8,742	4,896	56	1,137	9
11	Hamline-Midway	13,070	3,706	28	8,116	3,024	37	2,467	19
12	St. Anthony Park	7,039	1,607	23	4,102	3,032	74	975	14
13	Merriam Park, Lexington-Hamline	16,938	3,418	20	9,644	5,417	56	2,808	17
14	Macalester-Groveland	17,826	2,040	11	11,368	8,088	71	1,318	7
15	Highland	25,533	6,614	26	17,692	10,024	57	3,099	12
16	Summit Hill	7,232	1,036	14	4,985	3,477	70	567	8
17	Downtown	6,271	1,542	25	5,295	2,741	52	1,319	21
TOTAL		286,171	126,044	44	174,459	65,939	38	63,319	22

Sources: Author calculations using American Community Survey 2008-2012

Selected Demographics by Planning District

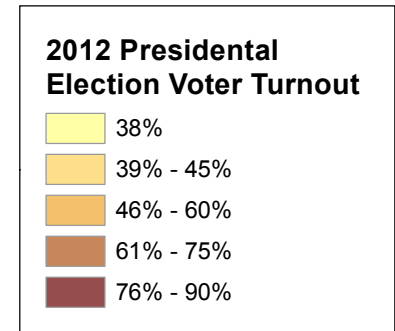
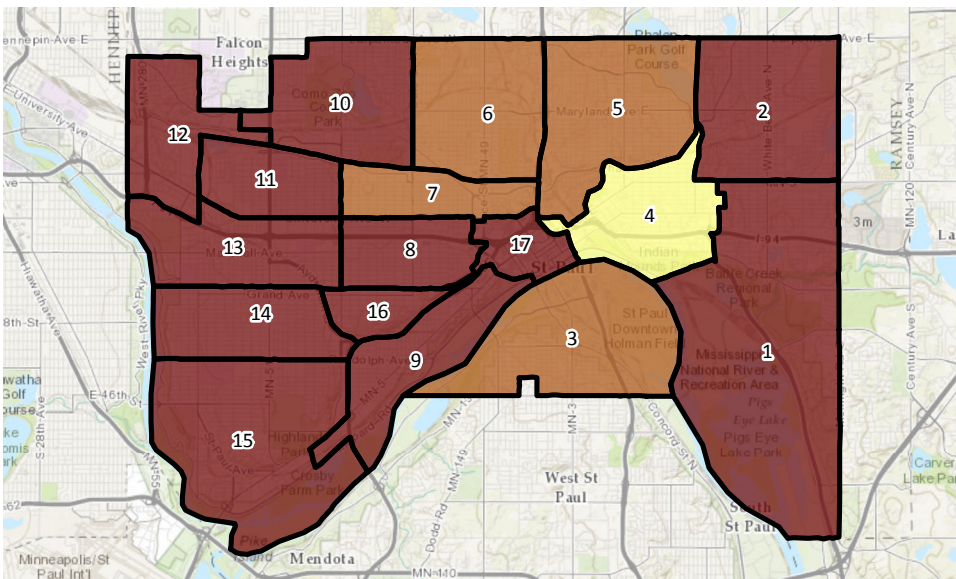
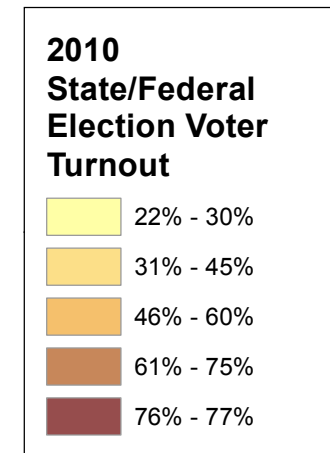
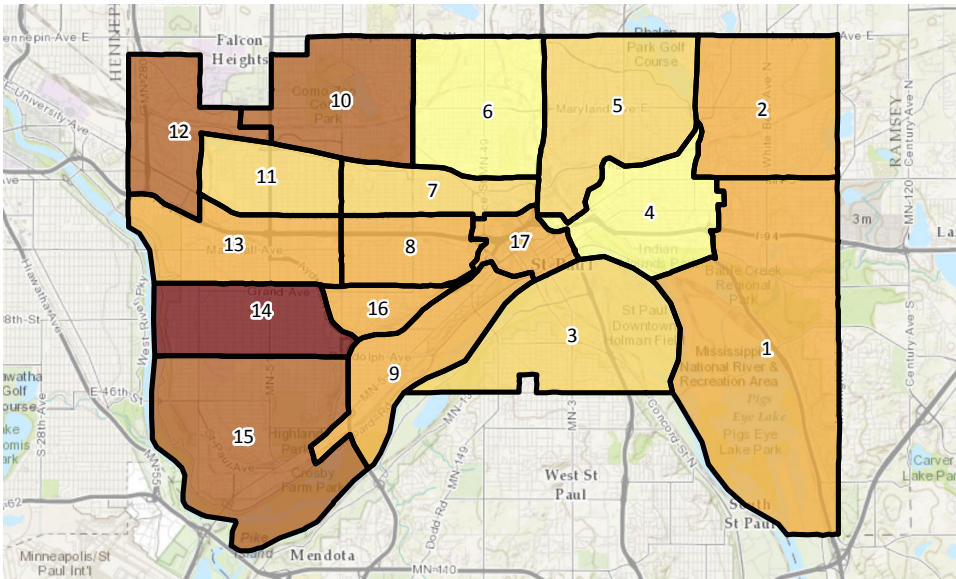
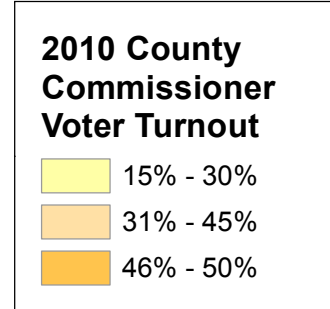
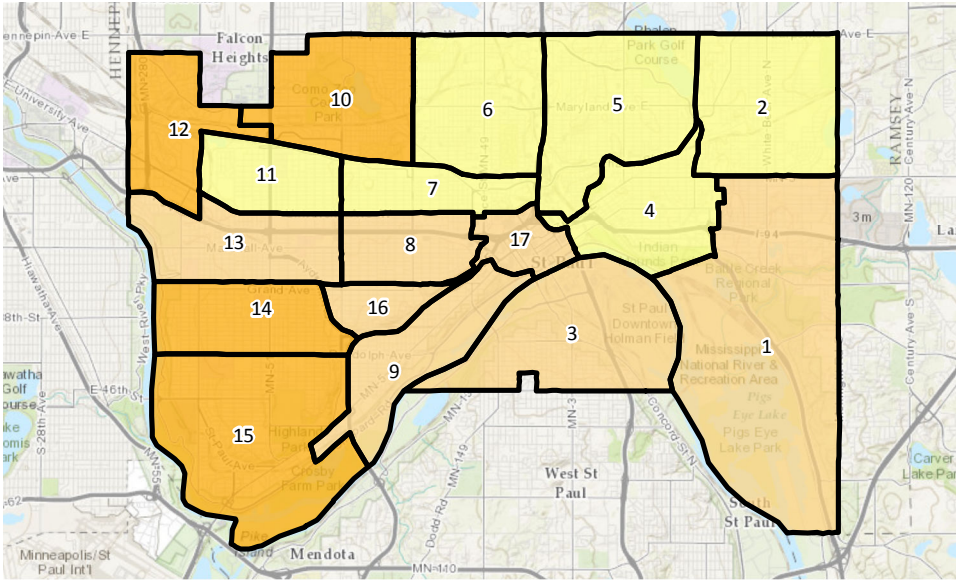


Center for Urban and Regional Affairs (CURA)

UNIVERSITY OF MINNESOTA

Source:
2008-2012 American Community Survey
Map by CURA Staff, Sept. 2014

Saint Paul Election Turnout Comparison: 2010 County Comisisoner, 2010 State/Federal and 2012 Presidential Elections by Planning District



Center for Urban and Regional Affairs (CURA)

UNIVERSITY OF MINNESOTA
Map by CURA Staff, Sept. 2014

Sources:
2008-2012 American Community Survey CVAP, State Legislative GIS Office, Author calculations using Ramsey County election data